

PROJECT: **WALTER ST  
 RESTROOM  
 REPLACEMENT &  
 SITEWORK  
 IMPROVEMENTS**

**OLBRICH PARK  
 500 & 502 WALTER ST  
 MADISON, WI 53714**

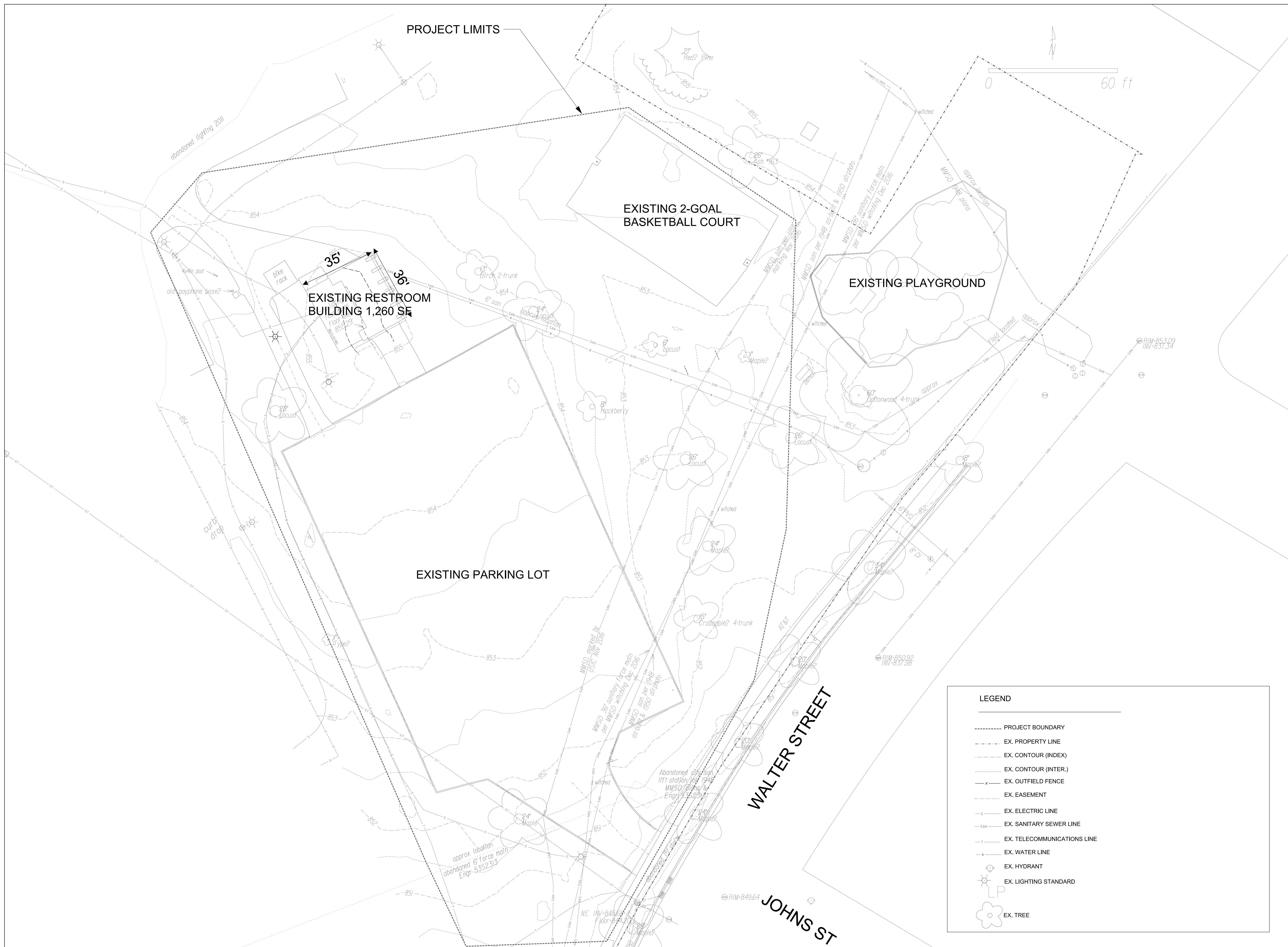
Although every effort has been made in preparing these plans and checking them for accuracy, the contractor and subcontractors must check all details and dimensions of their trade and be responsible for the same.

ITEM	DATE
Drawn by:	xx-xx-xxxx
Approved by:	xx-xx-xxxx

PUBLIC WORKS PROJECT #:  
**####**

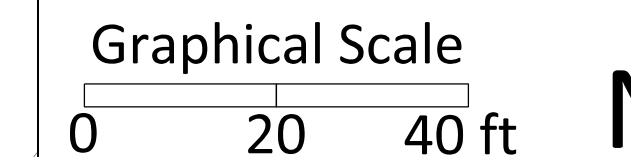
SHEET TITLE:  
**EXISTING SITE PLAN**

SHEET NUMBER:  
**L100**



**LEGEND**

- PROJECT BOUNDARY
- EX. PROPERTY LINE
- EX. CONTOUR (INDEX)
- EX. CONTOUR (INTER.)
- EX. OUTFIELD FENCE
- EX. EASEMENT
- EX. ELECTRIC LINE
- EX. SANITARY SEWER LINE
- EX. TELECOMMUNICATIONS LINE
- EX. WATER LINE
- EX. HYDRANT
- ☼ EX. LIGHTING STANDARD
- ☼ EX. TREE



PROJECT: **WALTER ST  
 RESTROOM  
 REPLACEMENT &  
 SITEWORK  
 IMPROVEMENTS**

**OLBRICH PARK  
 500 & 502 WALTER ST  
 MADISON, WI 53714**

Although every effort has been made in preparing these plans and checking them for accuracy, the contractor and subcontractors must check all details and dimensions of their trade and be responsible for the same.

ITEM	DATE
Drawn by:	xx-xx-xxxx
Approved by:	xx-xx-xxxx

PUBLIC WORKS PROJECT #:  
**####**

SHEET TITLE:  
**CONSTRUCTION  
 PHASING  
 PLAN**  
 SHEET NUMBER:

**L200**

**LEGEND**

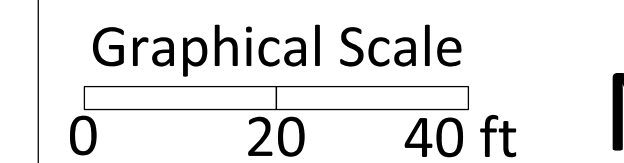
..... PROJECT BOUNDARY  
 - - - - - EX. PROPERTY LINE

**PHASING SCHEDULE**

AUGUST - FEBRUARY 2019  
 PHASE I

MARCH - JUNE 2019  
 PHASE II





PROJECT: **WALTER ST  
 RESTROOM  
 REPLACEMENT &  
 SITEWORK  
 IMPROVEMENTS**

**OLBRICH PARK  
 500 & 502 WALTER ST  
 MADISON, WI 53714**

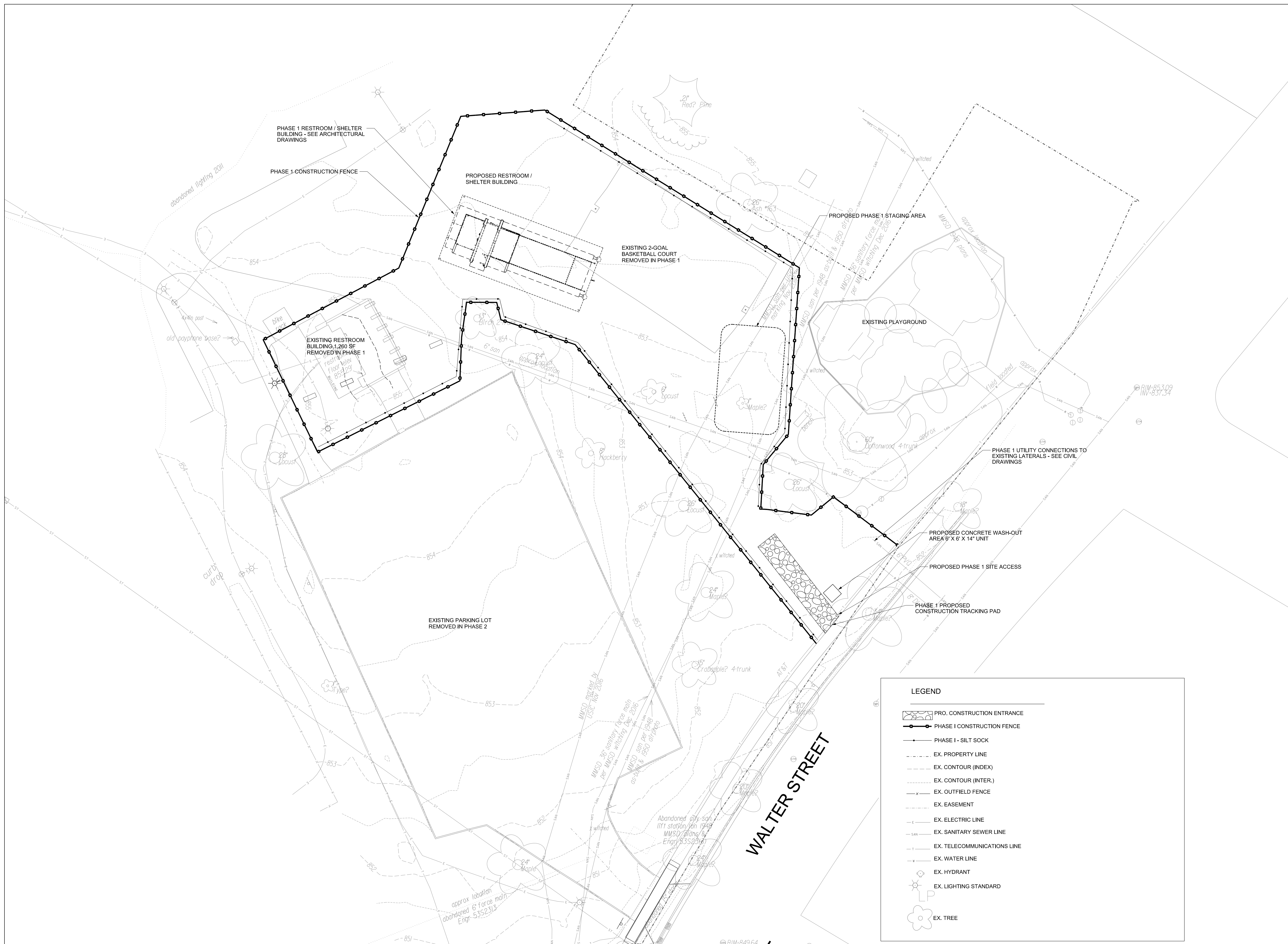
Although every effort has been made in preparing these plans and checking them for accuracy, the contractor and subcontractors must check all details and dimensions of their trade and be responsible for the same.

ITEM	DATE
Drawn by:	xx-xx-xxxx
Approved by:	xx-xx-xxxx

PUBLIC WORKS PROJECT #:  
**####**

SHEET TITLE:  
**PHASE I SITE ACCESS  
 AND EROSION  
 CONTROL PLAN**

SHEET NUMBER:  
**L201**



**LEGEND**

- PRO. CONSTRUCTION ENTRANCE
- PHASE I CONSTRUCTION FENCE
- PHASE I - SILT SOCK
- EX. PROPERTY LINE
- EX. CONTOUR (INDEX)
- EX. CONTOUR (INTER.)
- EX. OUTFIELD FENCE
- EX. EASEMENT
- EX. ELECTRIC LINE
- EX. SANITARY SEWER LINE
- EX. TELECOMMUNICATIONS LINE
- EX. WATER LINE
- EX. HYDRANT
- EX. LIGHTING STANDARD
- EX. TREE



City of Madison  
 Department of Public Works  
**PARKS DIVISION**  
 City-County Building, Suite 104  
 210 Martin Luther King, Jr. Blvd.  
 Madison, WI 53703

*play*  
**MADISON  
 PARKS**

Graphical Scale

0 40 ft



PROJECT: *WALTER ST  
 RESTROOM  
 REPLACEMENT &  
 SITEWORK  
 IMPROVEMENTS*

*OLBRICH PARK  
 500 & 502 WALTER ST  
 MADISON, WI 53714*

Although every effort has been made in preparing these plans and checking them for accuracy, the contractor and subcontractors must check all details and dimensions of their trade and be responsible for the same.

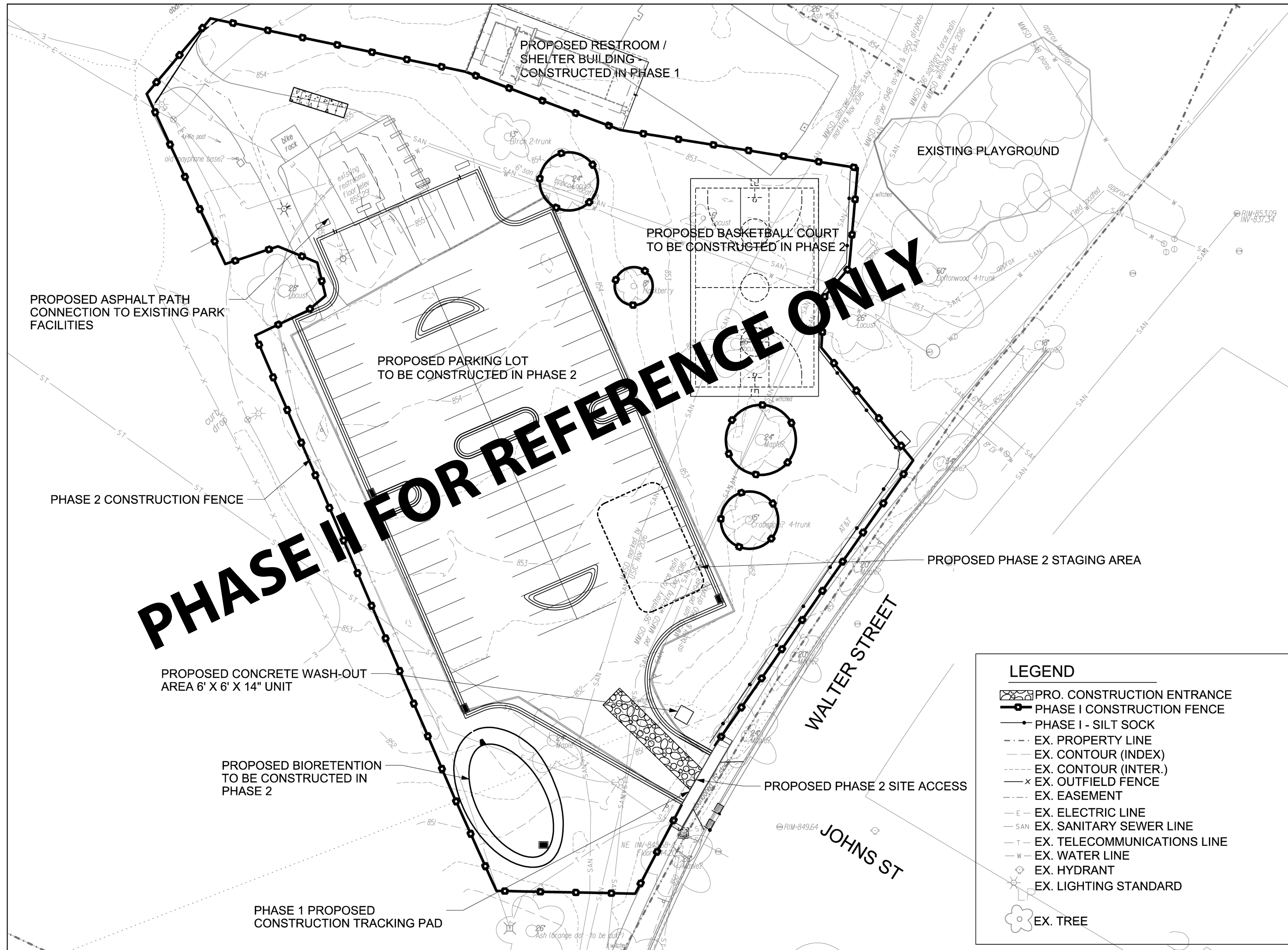
ITEM	DATE
Drawn by: KK	05-14-2018
Approved by:	xx-xx-xxxx

PUBLIC WORKS PROJECT #:  
**####**

SHEET TITLE:  
*PHASE 2 SITE ACCESS  
 AND EROSION  
 CONTROL PLAN*

SHEET NUMBER:

**L202**

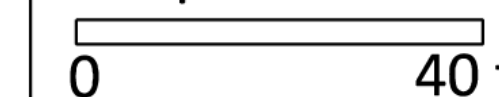


**LEGEND**

- PRO. CONSTRUCTION ENTRANCE
- PHASE I CONSTRUCTION FENCE
- PHASE I - SILT SOCK
- EX. PROPERTY LINE
- EX. CONTOUR (INDEX)
- EX. CONTOUR (INTER.)
- EX. OUTFIELD FENCE
- EX. EASEMENT
- EX. ELECTRIC LINE
- EX. SANITARY SEWER LINE
- EX. TELECOMMUNICATIONS LINE
- EX. WATER LINE
- EX. HYDRANT
- EX. LIGHTING STANDARD
- EX. TREE



Graphical Scale



PROJECT: **WALTER ST  
 RESTROOM  
 REPLACEMENT &  
 SITEWORK  
 IMPROVEMENTS**

**OLBRICH PARK  
 500 & 502 WALTER ST  
 MADISON, WI 53714**

Although every effort has been made in preparing these plans and checking them for accuracy, the contractor and subcontractors must check all details and dimensions of their trade and be responsible for the same.

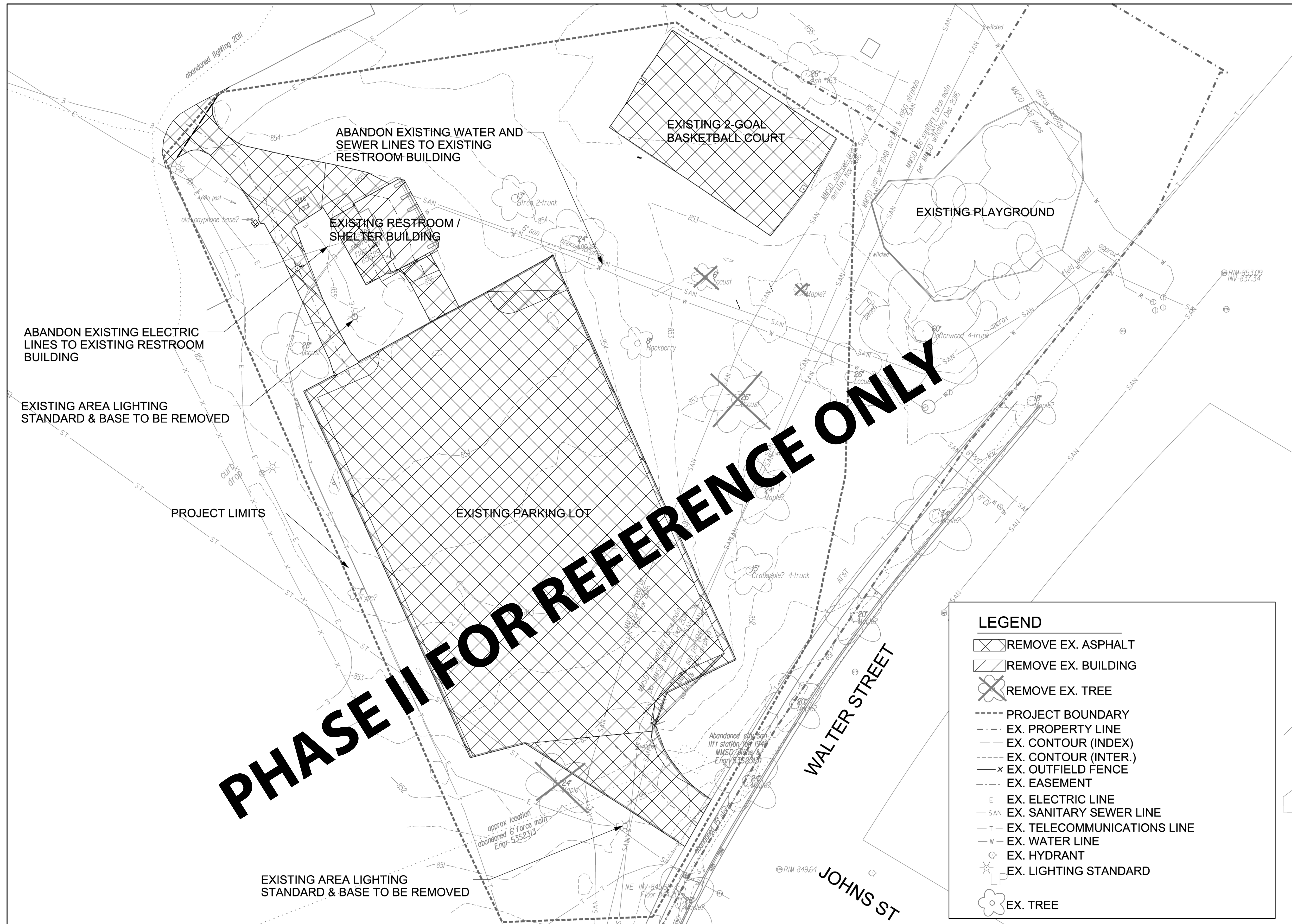
ITEM	DATE
Drawn by: KK	05-14-2018
Approved by:	xx-xx-xxxx

PUBLIC WORKS PROJECT #:  
**####**

SHEET TITLE:  
**SITE  
 DEMOLITION  
 PLAN**

SHEET NUMBER:

**L300**



**LEGEND**





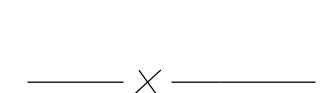


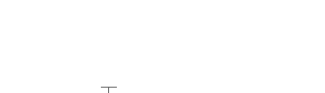

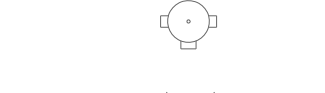

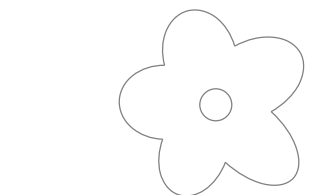
- REMOVE EX. ASPHALT
- REMOVE EX. BUILDING
- REMOVE EX. TREE
- PROJECT BOUNDARY
- EX. PROPERTY LINE
- EX. CONTOUR (INDEX)
- EX. CONTOUR (INTER.)
- EX. OUTFIELD FENCE
- EX. EASEMENT
- EX. ELECTRIC LINE
- EX. SANITARY SEWER LINE
- EX. TELECOMMUNICATIONS LINE
- EX. WATER LINE
- EX. HYDRANT
- EX. LIGHTING STANDARD
- EX. TREE







**LEGEND**

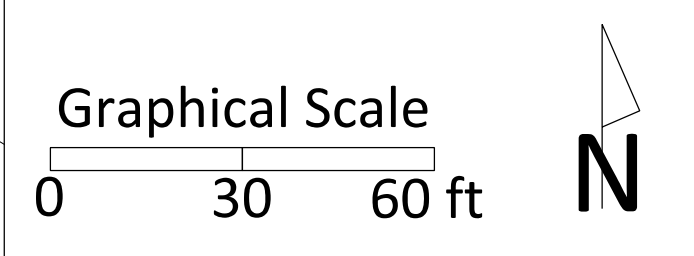
-  PRO. ASPHALT
-  PRO. CONCRETE
-  PRO. HANDICAPPED PARKING
-  PARK BOUNDARY
-  EX. OUTFIELD FENCE
-  EX. ELECTRIC LINE
-  EX. SANITARY SEWER LINE
-  EX. TELECOMMUNICATIONS LINE
-  EX. WATER LINE
-  EX. HYDRANT
-  EX. LIGHTING STANDARD
-  EX. TREE



OLBRICH PARK

City of Madison  
 Department of Public Works  
**PARKS DIVISION**  
 City-County Building, Suite 104  
 210 Martin Luther King, Jr. Blvd.  
 Madison, WI 53703

*play*  
**MADISON PARKS**



PROJECT: **WALTER ST RESTROOM REPLACEMENT & SITEWORK IMPROVEMENTS**

**OLBRICH PARK  
 500 & 502 WALTER ST  
 MADISON, WI 53714**

*Although every effort has been made in preparing these plans and checking them for accuracy, the contractor and subcontractors must check all details and dimensions of their trade and be responsible for the same.*

ITEM	DATE
Drawn by:	xx-xx-xxxx
Approved by:	xx-xx-xxxx

PUBLIC WORKS PROJECT #:  
**####**

SHEET TITLE:  
**FIRE ACCESS PLAN**

SHEET NUMBER:  
**L401**



City of Madison  
 Department of Public Works  
**PARKS DIVISION**  
 City-County Building, Suite 104  
 210 Martin Luther King, Jr. Blvd.  
 Madison, WI 53703

*play*  
**MADISON  
 PARKS**

Graphical Scale

0 40 ft



PROJECT: **WALTER ST  
 RESTROOM  
 REPLACEMENT &  
 SITEWORK  
 IMPROVEMENTS**

**OLBRICH PARK  
 500 & 502 WALTER ST  
 MADISON, WI 53714**

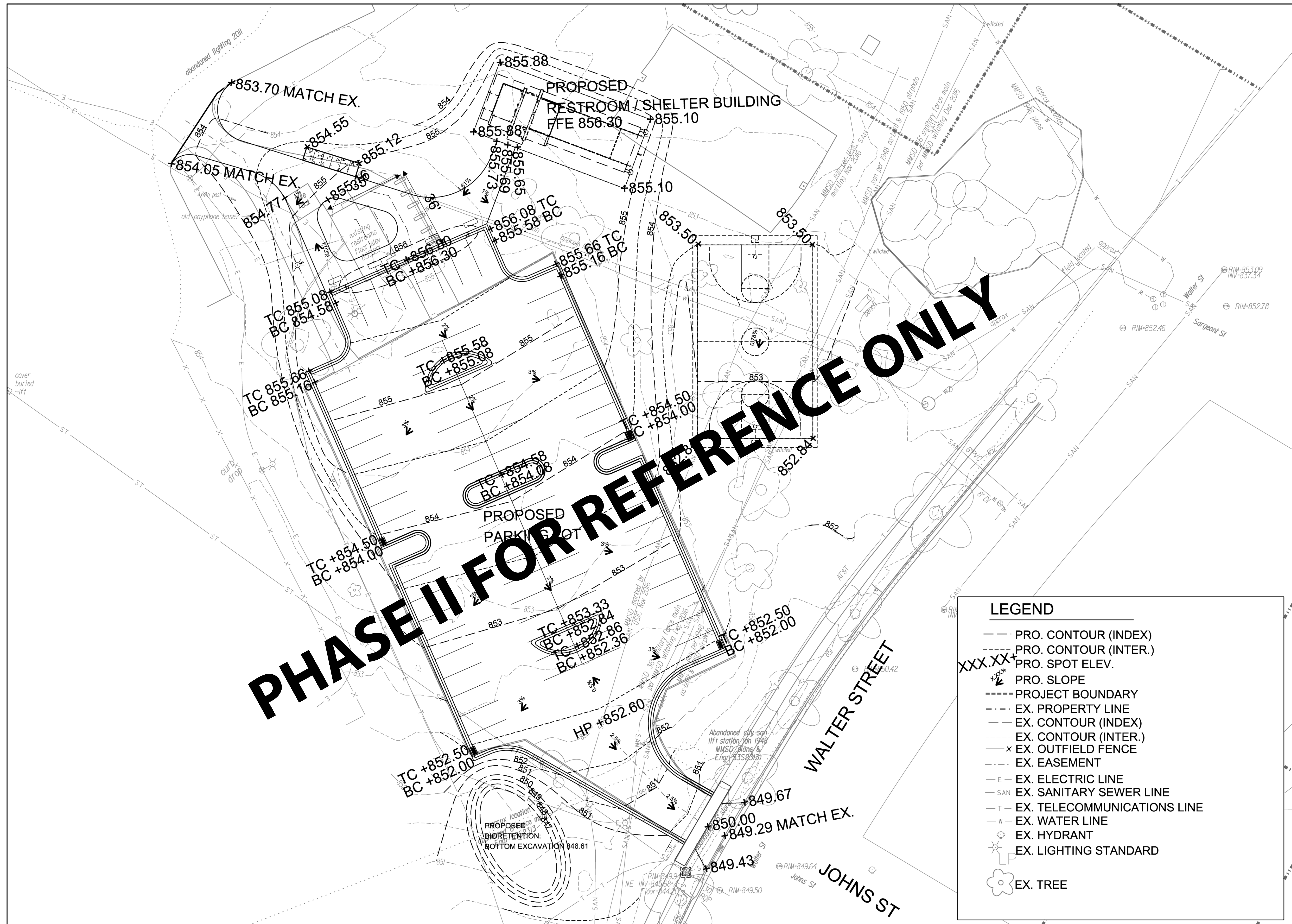
Although every effort has been made in preparing these plans and checking them for accuracy, the contractor and subcontractors must check all details and dimensions of their trade and be responsible for the same.

ITEM	DATE
Drawn by: KK	05-14-2018
Approved by:	xx-xx-xxxx

PUBLIC WORKS PROJECT #:  
**####**

SHEET TITLE:  
**SITE GRADING  
 PLAN**

SHEET NUMBER:  
**L500**



**LEGEND**

- PRO. CONTOUR (INDEX)
- PRO. CONTOUR (INTER.)
- XXX.XX+ PRO. SPOT ELEV.
- ▲ PRO. SLOPE
- PROJECT BOUNDARY
- EX. PROPERTY LINE
- EX. CONTOUR (INDEX)
- EX. CONTOUR (INTER.)
- EX. OUTFIELD FENCE
- EX. EASEMENT
- E — EX. ELECTRIC LINE
- SAN — EX. SANITARY SEWER LINE
- T — EX. TELECOMMUNICATIONS LINE
- W — EX. WATER LINE
- ⊕ EX. HYDRANT
- ⊙ EX. LIGHTING STANDARD
- ⊗ EX. TREE



Graphical Scale

0 40 ft



PROJECT: **WALTER ST  
 RESTROOM  
 REPLACEMENT &  
 SITEWORK  
 IMPROVEMENTS**

**OLBRICH PARK  
 500 & 502 WALTER ST  
 MADISON, WI 53714**

Although every effort has been made in preparing these plans and checking them for accuracy, the contractor and subcontractors must check all details and dimensions of their trade and be responsible for the same.

ITEM	DATE
Drawn by: KK	03-28-2018
Approved by:	xx-xx-xxxx

PUBLIC WORKS PROJECT #:

**####**

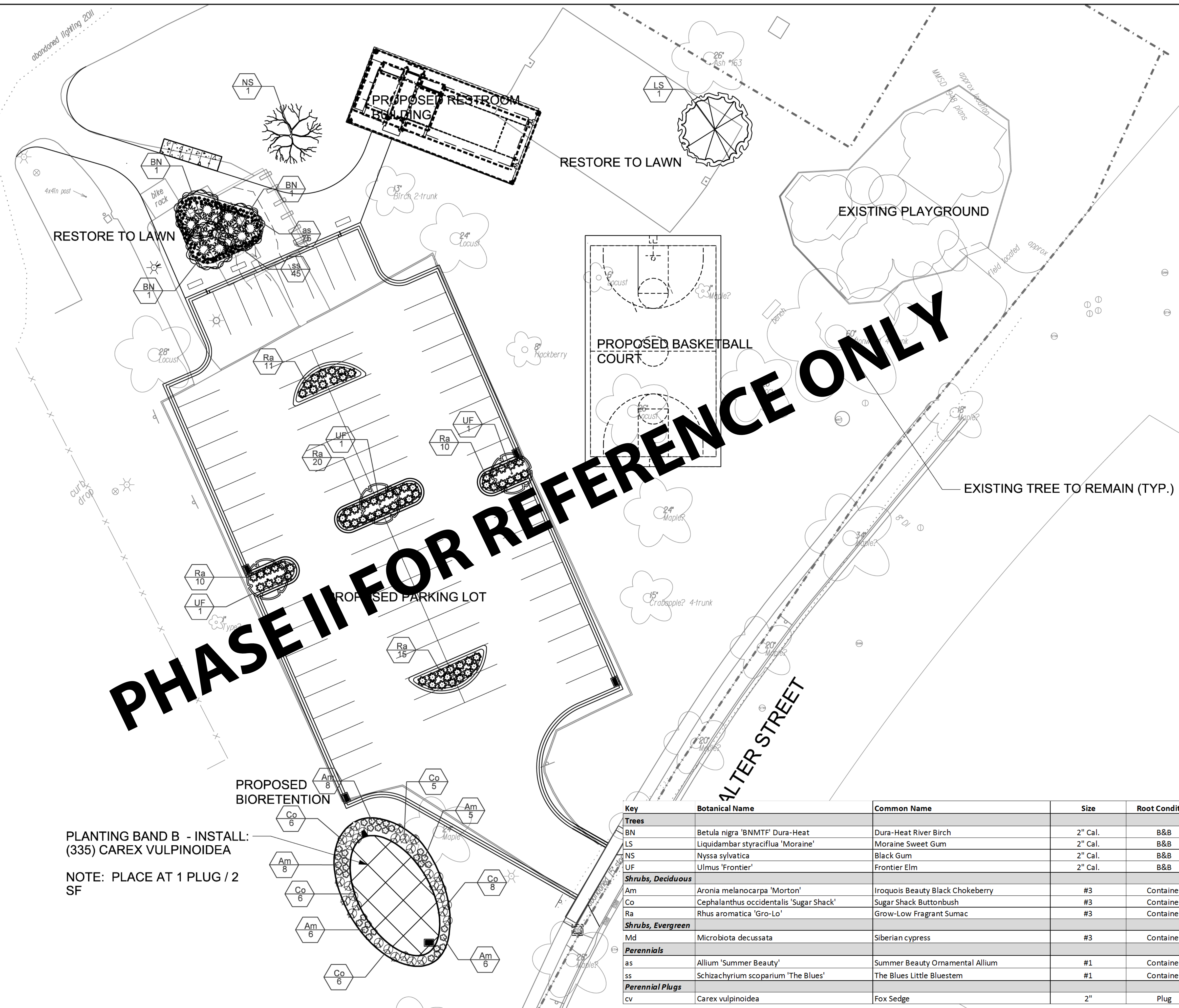
SHEET TITLE:

**SITE LANDSCAPE PLAN**

SHEET NUMBER:

**L600**

**PHASE II FOR REFERENCE ONLY**



PLANTING BAND B - INSTALL:  
 (335) CAREX VULPINOIDEA

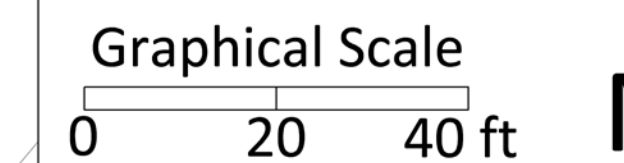
NOTE: PLACE AT 1 PLUG / 2  
 SF

Key	Botanical Name	Common Name	Size	Root Condition	Quantity
<b>Trees</b>					
BN	Betula nigra 'BNMTF' Dura-Heat	Dura-Heat River Birch	2" Cal.	B&B	3
LS	Liquidambar styraciflua 'Moraine'	Moraine Sweet Gum	2" Cal.	B&B	1
NS	Nyssa sylvatica	Black Gum	2" Cal.	B&B	1
UF	Ulmus 'Frontier'	Frontier Elm	2" Cal.	B&B	3
<b>Shrubs, Deciduous</b>					
Am	Aronia melanocarpa 'Morton'	Iroquois Beauty Black Chokeberry	#3	Container	33
Co	Cephalanthus occidentalis 'Sugar Shack'	Sugar Shack Buttonbush	#3	Container	31
Ra	Rhus aromatica 'Gro-Lo'	Grow-Low Fragrant Sumac	#3	Container	66
<b>Shrubs, Evergreen</b>					
Md	Microbiota decussata	Siberian cypress	#3	Container	16
<b>Perennials</b>					
as	Allium 'Summer Beauty'	Summer Beauty Ornamental Allium	#1	Container	75
ss	Schizachyrium scoparium 'The Blues'	The Blues Little Bluestem	#1	Container	45
<b>Perennial Plugs</b>					
cv	Carex vulpinoidea	Fox Sedge	2"	Plug	335



City of Madison  
 Department of Public Works  
**PARKS DIVISION**  
 City-County Building, Suite 104  
 210 Martin Luther King, Jr. Blvd.  
 Madison, WI 53703

*play*  
**MADISON  
 PARKS**



PROJECT: **WALTER ST  
 RESTROOM  
 REPLACEMENT &  
 SITEWORK  
 IMPROVEMENTS**

**OLBRICH PARK  
 500 & 502 WALTER ST  
 MADISON, WI 53714**

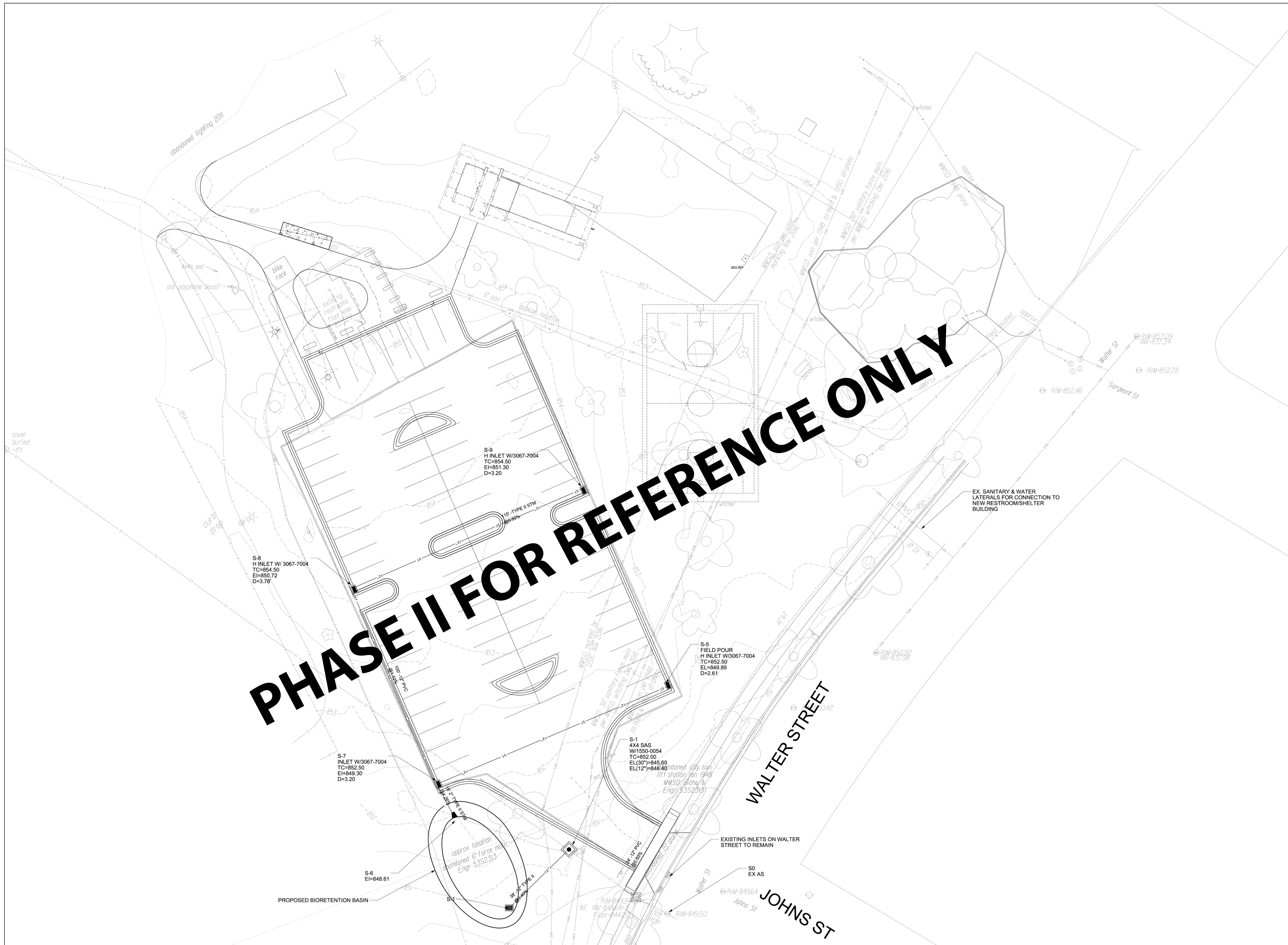
Although every effort has been made in preparing these plans and checking them for accuracy, the contractor and subcontractors must check all details and dimensions of their trade and be responsible for the same.

ITEM	DATE
Drawn by:	xx-xx-xxxx
Approved by:	xx-xx-xxxx

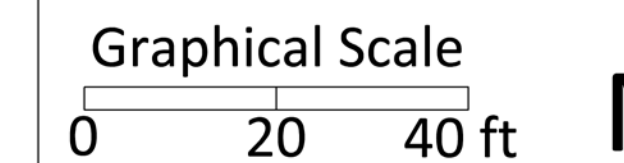
PUBLIC WORKS PROJECT #:  
**####**

SHEET TITLE:  
**STORM SEWER  
 PLAN**

SHEET NUMBER:  
**U100**







PROJECT: **WALTER ST  
 RESTROOM  
 REPLACEMENT &  
 SITEWORK  
 IMPROVEMENTS**

**OLBRICH PARK  
 500 & 502 WALTER ST  
 MADISON, WI 53714**

Although every effort has been made in preparing these plans and checking them for accuracy, the contractor and subcontractors must check all details and dimensions of their trade and be responsible for the same.

ITEM	DATE
Drawn by:	xx-xx-xxxx
Approved by:	xx-xx-xxxx

PUBLIC WORKS PROJECT #:  
**####**

SHEET TITLE:  
**BIO-RETENTION  
 DETAIL**

SHEET NUMBER:  
**U101**

